

2-Way Diaphragm Valve

Cast stainless steel body,
manually operated



Description

Series 10 manually operated diaphragm valve has a flow-optimized stainless steel body, a diaphragm, a bonnet and manual handle. The stainless steel body is available with various surface finish. The diaphragm is both a switch as well as a sealing element for the media. It is easily replaceable. A bonnet is provided for the protection of diaphragm and handle-mechanism. Flow can be continually adjusted with proper positioning of the handle. Position indicator is provided at top of the handle.

Main Features

- Cavity free and self-draining
- Hermetical separation of fluids from the operating mechanism by diaphragm
- Fully Autoclavable
- Full traceability as per EN 10204 3.1 and ASME BPE
- Various internal surface finish available each with less than 0.40 Ra

Dimensions

2-way diaphragm valve, cast stainless steel body, manually operated

Body with V-band (Hygienic) Clamp Connector

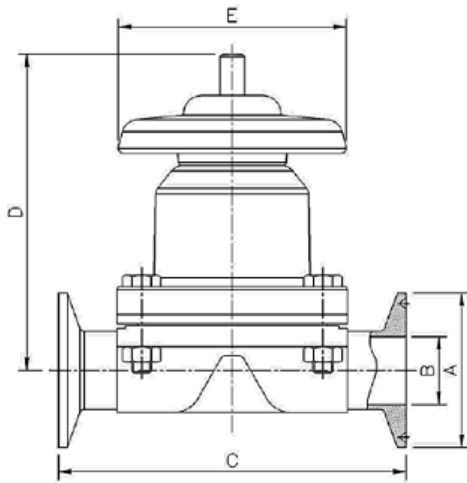


Figure 10-1 Bonnet & handle- Stainless Steel

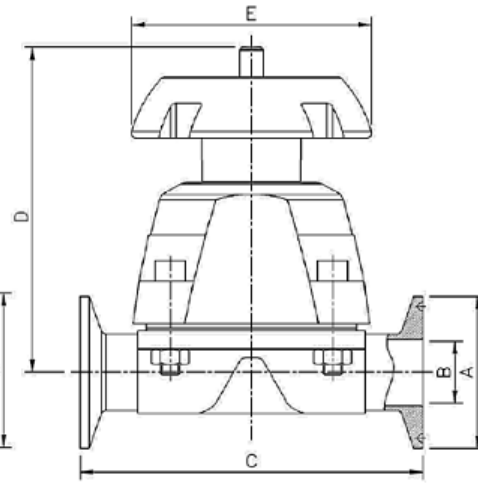


Figure 10-2 Bonnet & handle- Polyamide

Figure 10-1 Bonnet & handle- Stainless Steel

Connection Size	Flange OD	Pipe ID	Face to face length	Max. Valve Height From Pipe Center	Outside Diameter of Handle
	A [mm]	B [mm]	C [mm]	D [mm]	E [mm]
1/2" mini	25	9.4	63.5	69.5	40.0
1/2" Regular	25	9.4	88.9	78.5	59.5
3/4"	25	15.75	101.6	81.3	59.5
1"	50.4	22.1	114.3	104.4	91.0
1 1/2"	50.4	34.8	139.7	137.6	109.5
2"	63.9	47.5	158.8	143.8	109.5
2 1/2"	77.4	60.2	193.8	162.0	152.0
3"	90.9	72.9	222.3	168.0	152.0

Figure 10-2 Bonnet & handle- Polyamide

Connection Size	Flange OD	Pipe ID	Face to face length	Max. Valve Height From Pipe Center	Outside Diameter of Handle
	A [mm]	B [mm]	C [mm]	D [mm]	E [mm]
1/2" Regular	25	9.4	88.9	88.5	79.0
3/4"	25	15.75	101.6	91.3	79.0
1"	50.4	22.1	114.3	111.7	93.0
1 1/2"	50.4	34.8	139.7	130.0	116.5
2"	63.9	47.5	158.8	136.2	116.5
2 1/2"	77.4	60.2	193.8	170.0	149.0
3"	90.9	72.9	222.3	176.0	149.0

- No position indicator available for this valve

2-way diaphragm valve, cast stainless steel body, manually operated

Body with Butt-weld End

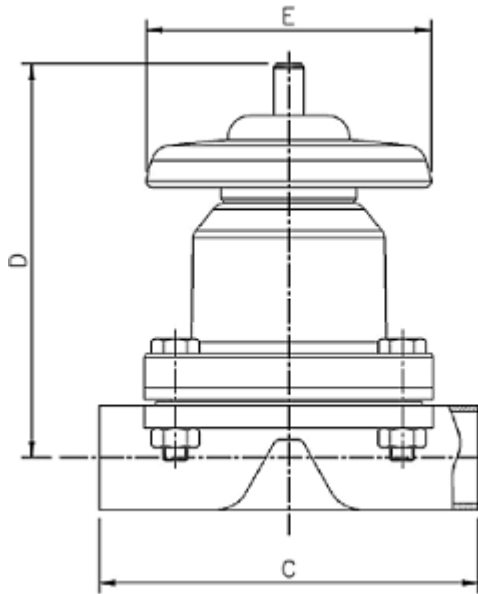


Figure 10-3 Bonnet & handle- Stainless Steel

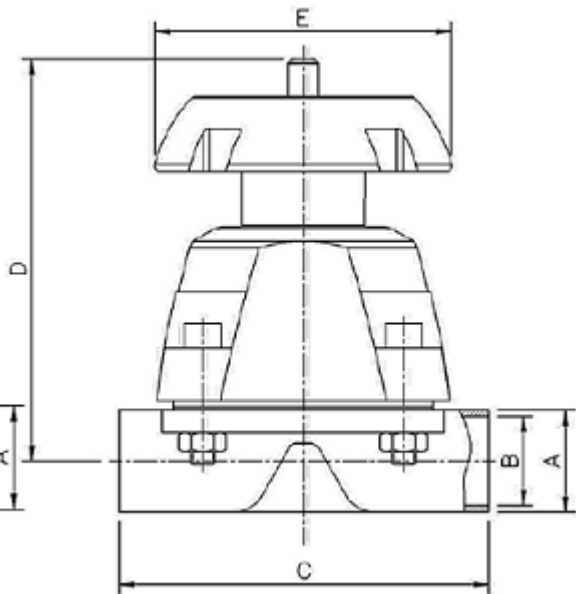


Figure 10-4 Bonnet & handle- Polyamide

Figure 10-3 Bonnet & handle- Stainless Steel

Connection Size	Flange OD	Pipe ID	Face to face length	Max. Valve Height From Pipe Center	Outside Diameter of Handle
	A [mm]	B [mm]	C [mm]	D [mm]	E [mm]
1/2" mini	12.7	9.4	70.0	69.5	40.0
1/2" Regular	12.7	9.4	84.0	78.5	59.5
3/4"	19.05	15.75	84.0	81.3	59.5
1"	25.40	22.10	108.0	104.4	91.0
1 1/2"	38.10	34.80	131.0	137.6	109.5
2"	50.80	47.50	131.0	143.8	109.5
2 1/2"	63.50	60.20	154.0	162.0	152.0
3"	76.20	72.90	154.0	168.0	152.0

Figure 10-4 Bonnet & handle- Polyamide

Connection Size	Flange OD	Pipe ID	Face to face length	Max. Valve Height From Pipe Center	Outside Diameter of Handle
	A [mm]	B [mm]	C [mm]	D [mm]	E [mm]
1/2" Regular	12.7	9.4	84.0	88.5	79.0
3/4"	19.05	15.75	84.0	91.3	79.0
1"	25.40	22.1	108.0	111.7	93.0
1 1/2"	38.10	34.8	131.0	130.0	116.5
2"	50.80	47.5	131.0	136.2	116.5
2 1/2"	63.50	60.2	154.0	170.0	149.0
3"	76.20	72.9	154.0	176.0	149.0

- No position indicator available for this valve

Notes:

1. Dimensions and tolerances for end connections and face-to-face length are as per ASME BPE.
2. All other dimensions are approximate and subject to change without prior notice.
3. Dimensions for valves with stainless steel bonnet and polyamide handle will be provided on request.

Technical Data

Processing medium

Neutral gases and liquids, high purity, sterile, aggressive or abrasive fluids

Temperature

Media temperature		Sterilization temperature		Ambient Temperature
EPDM	-10°C to 75°C	EPDM	Briefly up to 130°C	Up to 90°C
PTFE	-10°C to 90°C	PTFE	Briefly up to 150°C	

Diaphragm size	Operating pressure [bar]	
	EPDM	PTFE
8	0 - 8	0 - 6

All pressures are gauge pressures. Operating pressure values were determined with static operating pressure applied on one side of a closed valve. Sealing at the valve seat and atmospheric sealing is ensured for the given values. Information on operating pressures applied on both sides and for high purity media on request.

Valve body material

MOC – Wetted (Contact)	MOC – Non-wetted (Non- contact)
ASTM A351 CF3M (SS 316L)	Polyamide or ASTM A351 CF8 (SS 304)

End connection

V-band (Hygienic) Clamp	ASME BPE (EN ISO 1127/ISO 4200 and BS 4825 are available on request)
Butt-Weld	

Data Order

Connection Size		Type of Diaphragm		Certificate									
M5	1/2" Mini	EPDM	E	ISO 9001	9								
R5	1/2" Regular	PTFE	P	ISO 9001 + 'CE' (PED 97/23/EC)	p ¹								
07	3/4"	<table border="1"> <thead> <tr> <th colspan="2">Connection Type</th> </tr> </thead> <tbody> <tr> <td>ASME BPE</td> <td>A</td> </tr> <tr> <td>BS 4825</td> <td>B</td> </tr> <tr> <td>EN ISO 1127 / ISO 4200</td> <td>E²</td> </tr> </tbody> </table>				Connection Type		ASME BPE	A	BS 4825	B	EN ISO 1127 / ISO 4200	E ²
Connection Type													
ASME BPE	A												
BS 4825	B												
EN ISO 1127 / ISO 4200	E ²												
10	1"												
15	1 1/2"												
20	2"												
25	2 1/2"												
30	3"												

Type of End Connection		Surface Finish		Bonnet & handle Material of Construction ³	
Butt Weld	B	Mechanical Polish	M	ASTM A351 GR CF8	C
V- Band (hygienic) Clamp	T	Electro Polish	E	Polyamide	P

Order Example	LE	10	A	10	E	P	P	E	T	9
Leistung										
Series #										
Conn. Type										
Conn. Size										
Type of diaphragm										
Bonnet										
Handle										
Surface finish										
Type of end conn.										
Certificate										

Notes:

- 'CE'-marking is applicable for valves with connection sizes 1 1/2", 2", 2 1/2" and 3" only.
- EN ISO 1127/ISO 4200 offers standards for butt-weld end connections only.
- Combination of polyamide bonnet and steel handle (LE10XXXXPCXXX) is not available.
- Valves with end connection sizes according to EN ISO 1127/ISO 4200 and BS 4825 are available on request

Contact: sales@titanresearch.ca
<https://www.titangroupsupply.com/>

Tell: 1-800-820-0092

Fax: 1-416-849-0116

For further diaphragm valves, gaskets, compatible actuators & accessories and other products, please contact us for pricing.