

## Side Sampling Valve

Machined stainless steel body,  
manually operated



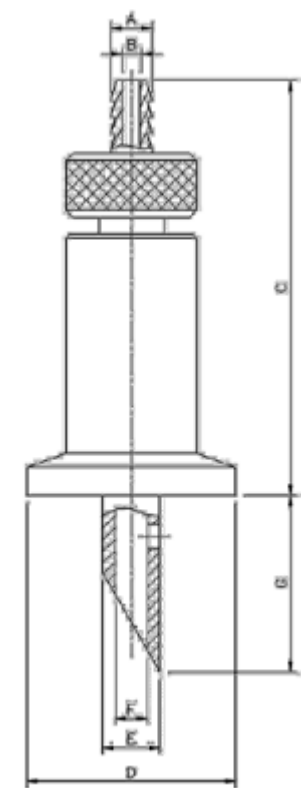
### Description

Series 90 manually operated sampling valve has a flow optimized stainless steel body, a diaphragm with internal mechanism, an 'O'-ring and a thimble. The stainless steel body is available with various surface finish. Side sampling valve has a stem that can be inserted into the clamp adapter attached with the flow line to allow the fluid inside it. This stem is designed for zero dead leg. The fluid (media) will pass through the valve to outlet hose connector on opening of valve. The diaphragm is both a switch as well as a sealing element for the media. It is easily replaceable. An O-ring is also provided for the purpose of backup sealing. Flow can be passed by rotating the thimble provided at the end of the valve. It is attached to the internal mechanism at one side and outlet hose connector at the other side.

### Main Features

- Unique design eliminates dead spaces
- Mid-stream sample collection
- Designed for production line sampling
- Fully machined from SS 316L
- CIP capable and crevice free
- Self-draining operation
- Fully Autoclavable
- Various internal surface finish available

## Dimensions



*Side sampling valve, machined stainless steel body, manually operated*

### Dimensions for end connections according to ASME BPE connection type

Connection Size	Hose Conn. OD	Hose Conn. ID	Max Face to Face Distance	Flange OD of Clamp Adapter	Stem Pipe OD	Stem Pipe ID	Total Height of Stem
	A [mm]	B [mm]	C [mm]	D [mm]	E [mm]	F [mm]	H [mm]
1/2"	5.0	2.2	54.0	25.0	7.0	4.0	21.5
1"	5.0	2.2	54.0	50.4	7.0	4.0	21.5

## Technical Data

### Processing medium

Neutral liquids, high purity, sterile, aggressive or abrasive fluids

### Temperature

Media temperature	Sterilization temperature	Ambient Temperature
-10°C to 90°C	Briefly up to 150°C	Up to 90°C

'O' Ring material	FKM / FPM (fluoroelastomer)
Seal Material	PTFE

### Valve body material

MOC

Stainless Steel 316L

### End connection

V-band (Hygienic) Clamp

ASME BPE  
(EN ISO 1127/ISO 4200 and BS 4825 are available on request)

### Data Order

Connection Size		Certificate		Connection Type		Surface Finish	
05	1/2"	ISO 9001	9	ASME BPE	A	Electrical Polish	E
10	1"			BS 4825	B	Mechanical Polish	M

Order Example	LE	90	A	05	E	9
Leistung						
Series #						
Conn. Type						
Conn. Size						
Surface Finish						
Certificate						

#### Notes:

- Valves with end connection sizes according to BS 4825 are available on request

Contact: [info@titangroupsupply.com](mailto:info@titangroupsupply.com)

<https://www.titangroupsupply.com/>

Tel: 1-800-820-0092

Fax: 1-416-849-0116

For further diaphragm valves, gaskets, compatible actuators & accessories and other products, please contact us for pricing.