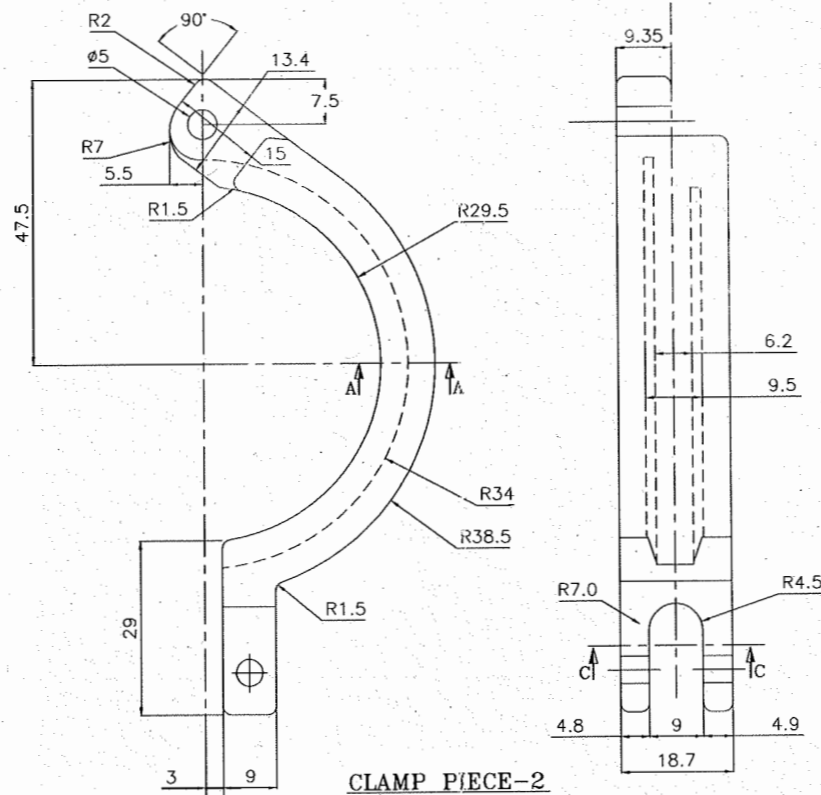
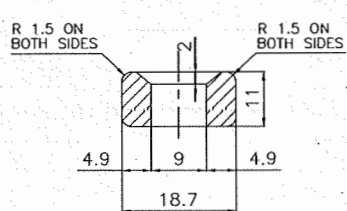


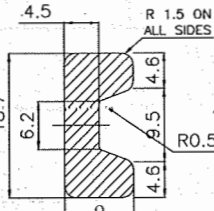
CLAMP PIECE-1



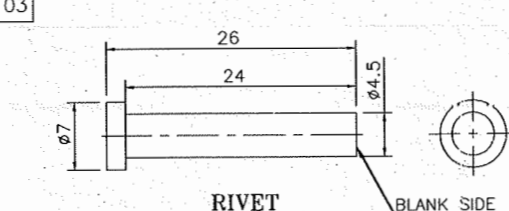
CLAMP PIECE-2



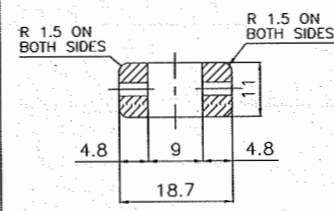
SECTION BB



SECTION AA

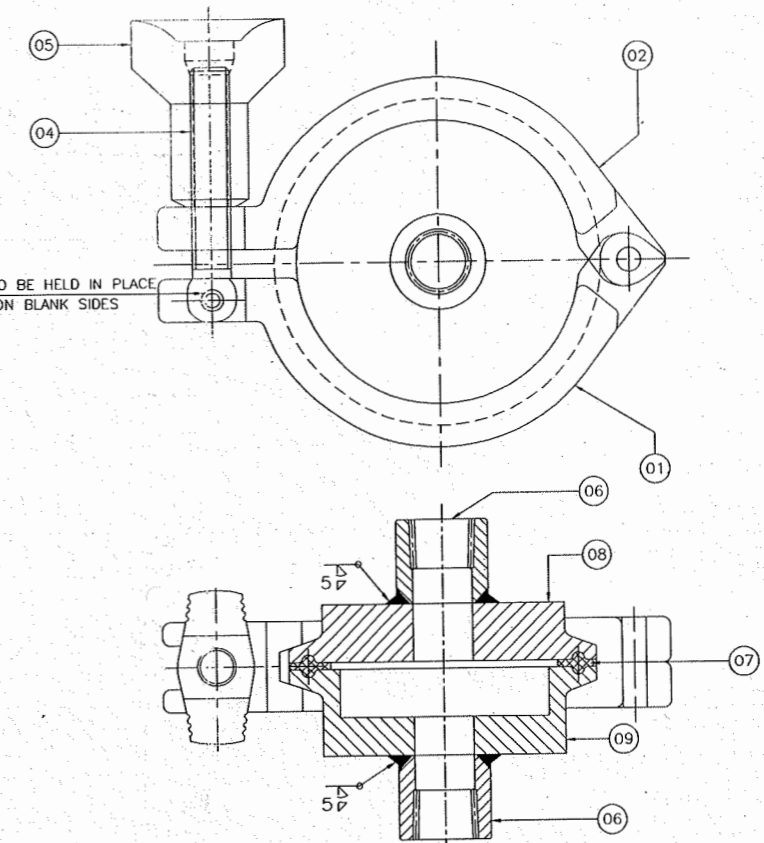


RIVET



SECTION CC

03 THE RIVETS ARE TO BE HELD IN PLACE BY HAMMERING ON BLANK SIDES



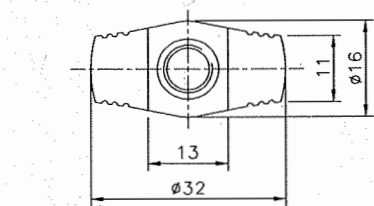
2 INCH CLAMP ASSEMBLY NOT TO SCALE

NOTE :-

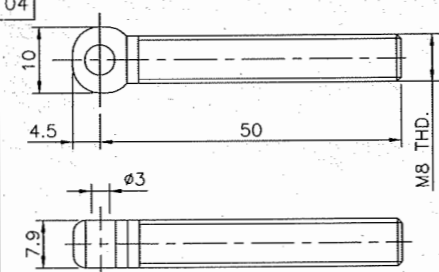
- 1, ALL DIMENSIONS ARE IN MM, UNLESS OTHERWISE INDICATED.
- 2, REMOVE SHARP EDGES.
- 3, TOLERANCE OTHERWISE NOT STATED SHALL BE AS PER IS 2102(PART-1) 1993 CLASS M.
- 4, PART NO 01 AND PART NO 02 ARE TO BE RIVETED BY PART NO 03
- 5, PART NO 01 AND PART NO 04 ARE TO BE RIVETED BY PART NO 03

09	FERRULE-2	01	Ø63.9 x 13 L	SA-479M GR 316L	LETDC/SA-479M/316L REV. 0
08	FERRULE-1	01	Ø63.9 x 12 L	SA-479M GR 316L	LETDC/SA-479M/316L REV. 0
07	GASKET	01	AS SHOWN IN DRAWING	SILICON	-
06	HALF COUPLING	02	ASME B16.11 NPS 1/4 CL 3000	SA-182M F 316L	LETDC/SA-182M/F316L REV. 0
05	CLAMP NUT	01	AS SHOWN IN DRAWING	SA-351M GR CF8	LETDC/SA-351M/CF8 REV. 0
04	CLAMP 'I' BOLT	01	Ø10 x 53 L	SA-479M GR 304	LETDC/SA-479M/304 REV. 0
03	RIVET	02	Ø6 x 24 L	SA-479M GR 304	LETDC/SA-479M/304 REV. 0
02	CLAMP PIECE-2	01	AS SHOWN IN DRAWING	SA-351M GR CF8	LETDC/SA-351M/CF8 REV. 0
01	CLAMP PIECE-1	01	AS SHOWN IN DRAWING	SA-351M GR CF8	LETDC/SA-351M/CF8 REV. 0

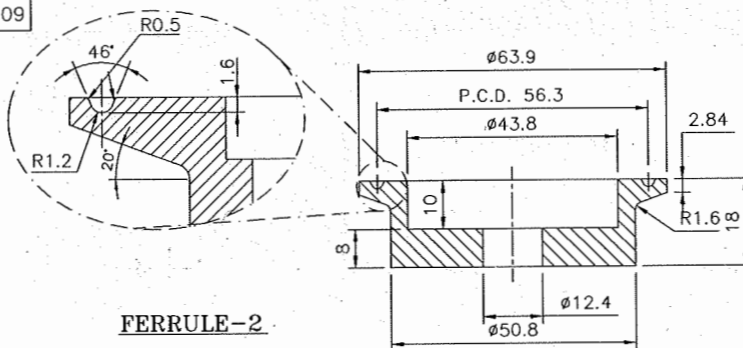
SR. NO.	DESCRIPTION	QTY.	SIZE	M.O.C.	T.D.C.
---------	-------------	------	------	--------	--------



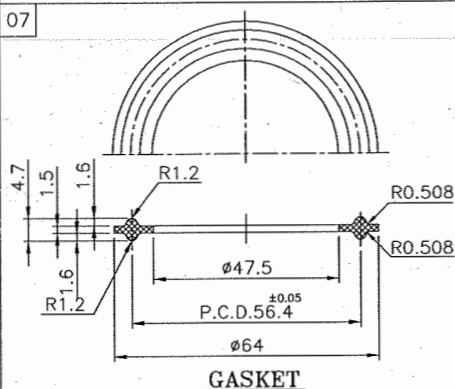
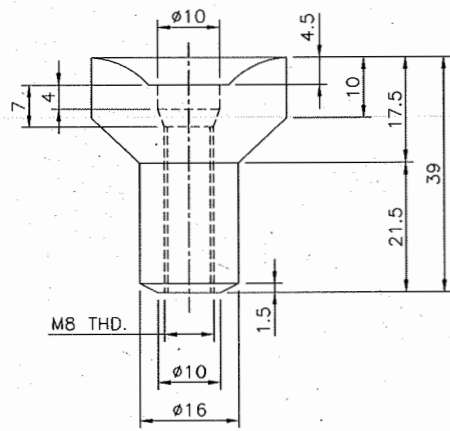
CLAMP NUT



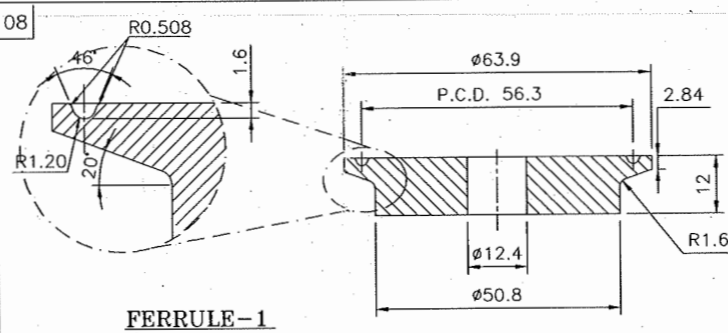
CLAMP 'I' BOLT



FERRULE-2



GASKET



FERRULE-1

ASME

P. Patel
15/10/15
S. Sankar
15-10-15
P. D. D.
15-10-15

0	15/10/15	FIRST ISSUE	R.V.	KS	SD
REV.NO.	DATE	DESCRIPTION	DRN	CHK	APPD

LEISTUNG LEISTUNG ENGINEERING PVT. LTD.
AHMEDABAD, INDIA

DRN	R.V.	15/10/15	TITLE:-
CHK	K.S.	15/10/15	DETAILS OF 2 INCH CLAMP ASSEMBLY
APPD	S.D.	15/10/15	

SCALE AS SHOWN APPLICABLE : PROOF TEST OF 2" CLAMP ASSEMBLY

CATEGORY	SHEET NO.	DRG. NO. :	REV. 0
DETAIL	1 OF 1	LEAA20T	