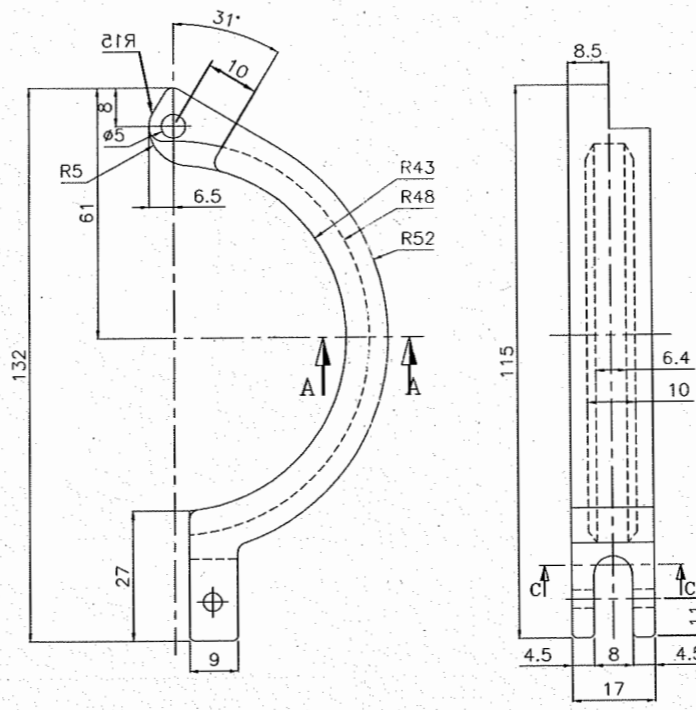
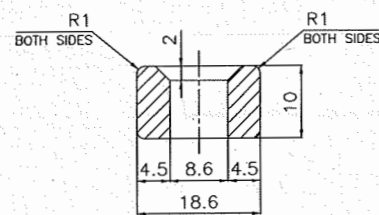


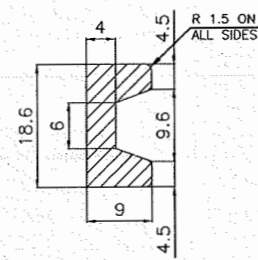
CLAMP PIECE-1



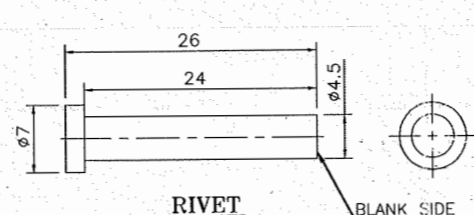
CLAMP PIECE-2



SECTION BB

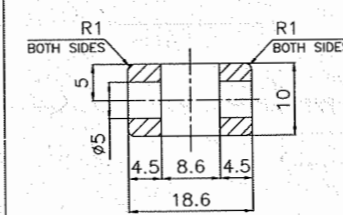


SECTION AA



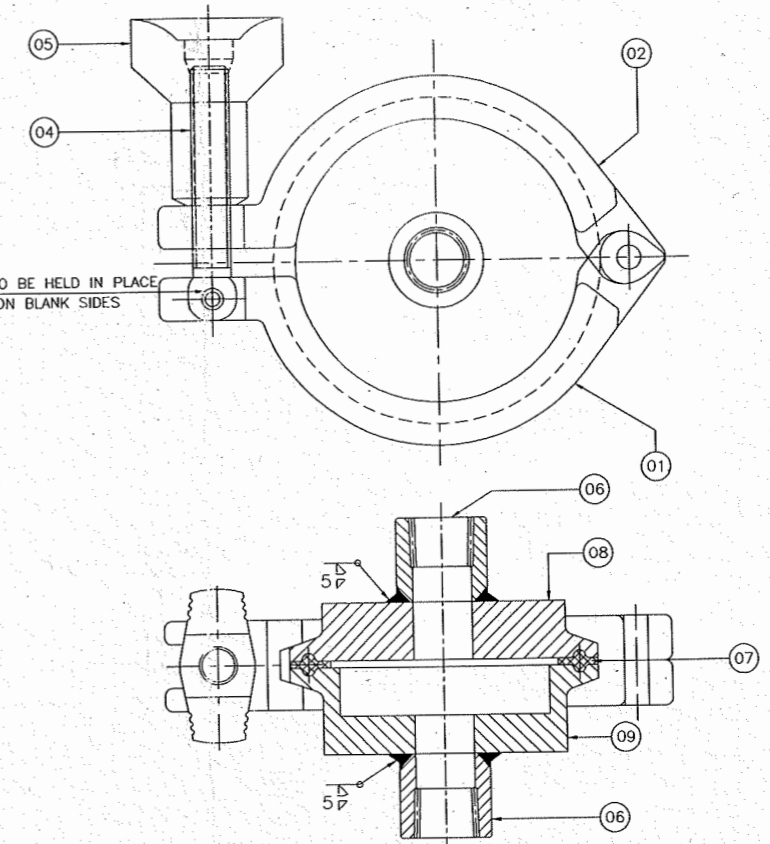
RIVET

BLANK SIDE



SECTION CC

03 THE RIVETS ARE TO BE HELD IN PLACE BY HAMMERING ON BLANK SIDES



3 INCH CLAMP ASSEMBLY NOT TO SCALE

NOTE :-

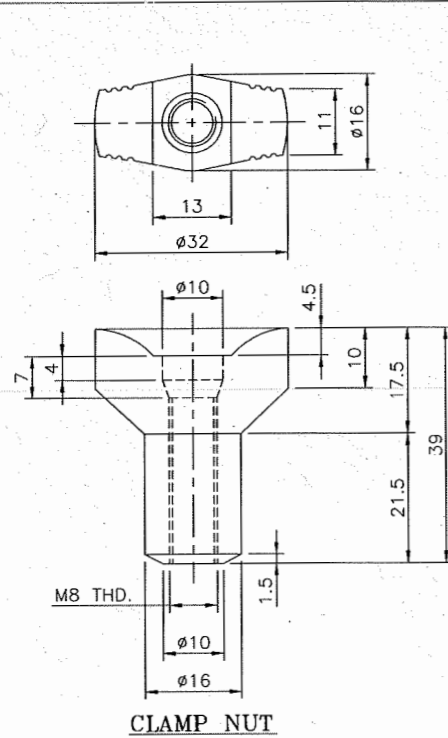
1. ALL DIMENSIONS ARE IN MM, UNLESS OTHERWISE INDICATED.
2. REMOVE SHARP EDGES.
3. TOLERANCE OTHERWISE NOT STATED SHALL BE AS PER IS 2102(PART-1) 1993 CLASS M.
4. PART NO. 01 AND PART NO. 02 ARE TO BE RIVETED BY PART NO. 03
5. PART NO. 01 AND PART NO. 04 ARE TO BE RIVETED BY PART NO. 03

09	FERRULE-2	01	Ø90.9 x 20 L	SA-479M GR 316L	LETDC/SA-479M/316L REV. 0
08	FERRULE-1	01	Ø90.9 x 12 L	SA-479M GR 316L	LETDC/SA-479M/316L REV. 0
07	GASKET	01	AS SHOWN IN DRAWING	SILICON	-
06	HALF COUPLING	02	ASME B16.11 NPS 1/4 CL 3000	SA-182M F 316L	LETDC/SA-182M/F316L REV. 0
05	CLAMP NUT	01	AS SHOWN IN DRAWING	SA-351M GR CF8	LETDC/SA-351M/CF8 REV. 0
04	CLAMP 'I' BOLT	01	Ø10 x 54.5 L	SA-479M GR 304	LETDC/SA-479M/304 REV. 0
03	RIVET	02	Ø7 x 26 L	SA-479M GR 304	LETDC/SA-479M/304 REV. 0
02	CLAMP PIECE-2	01	AS SHOWN IN DRAWING	SA-351M GR CF8	LETDC/SA-351M/CF8 REV. 0
01	CLAMP PIECE-1	01	AS SHOWN IN DRAWING	SA-351M GR CF8	LETDC/SA-351M/CF8 REV. 0

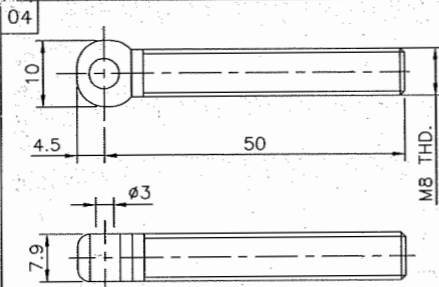
SR. NO.	DESCRIPTION	QTY.	SIZE	M.O.C.	T.D.C.
---------	-------------	------	------	--------	--------

ASME

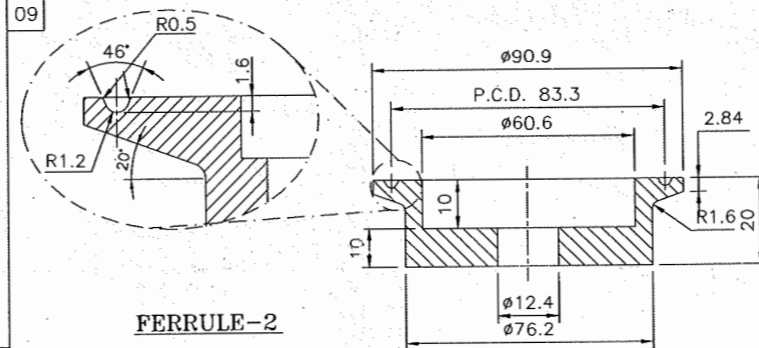
Revi 15-10-15
K.P. Muley 15-10-15
A.J. Dhami 15-10-15



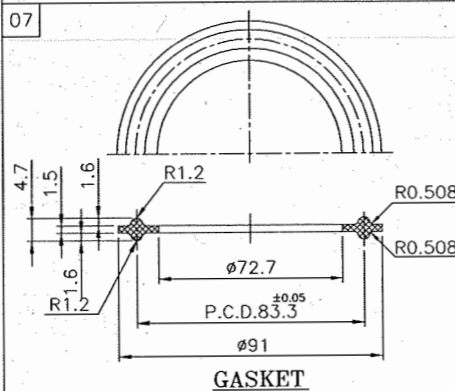
CLAMP NUT



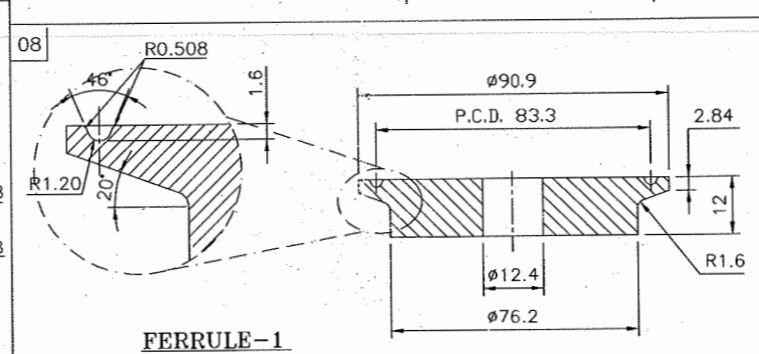
CLAMP 'I' BOLT



FERRULE-2



GASKET



FERRULE-1

0	15/10/15	FIRST ISSUE	R.V.	KS	SD
REV.NO.	DATE	DESCRIPTION	DRN	CHK	APPD
		LEISTUNG	LEISTUNG ENGINEERING PVT. LTD. AHMEDABAD, INDIA		
DRN	R.V.	15/10/15	TITLE:-		
CHK	K.S.	15/10/15	DETAILS OF 3 INCH CLAMP ASSEMBLY		
APPD	S.D.	15/10/15			
SCALE	AS SHOWN	APPLICABLE : PROOF TEST OF 3" CLAMP ASSEMBLY			
CATEGORY	SHEET NO.	DRG. NO. :		REV.	
DETAIL	1 OF 1	LETA30T		0	